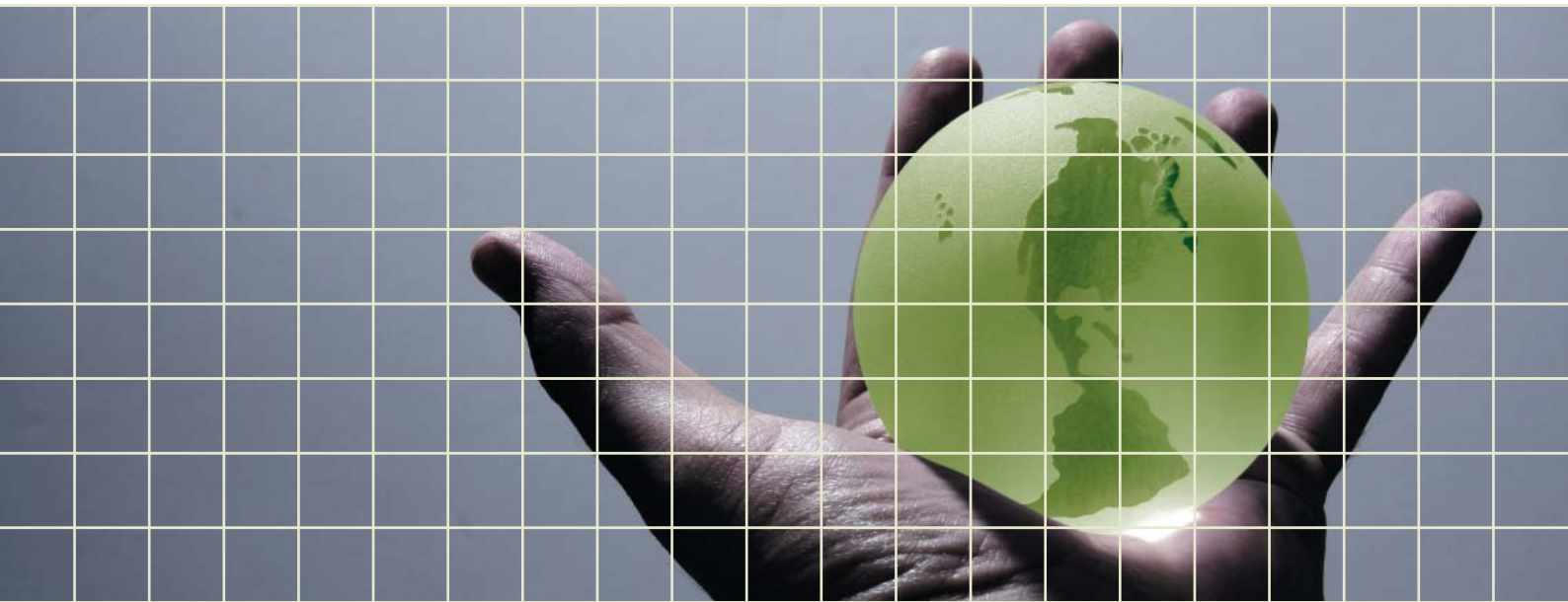


GIS the way you want it
ArcGIS 9.3





ArcGIS 9.3 Delivering GIS the way you want it

ArcGIS is a complete and interoperable system to author, serve and use geographic information. It provides visualisation and cartographic capabilities, spatial analysis and geographic data management, as well as focused solutions for specific needs and a complete developer environment for building customised and integrated systems.

What you want

Integration with flexibility

ArcGIS allows spatial information to be shared throughout the organisation via centrally-managed, focused applications. End users do not need to be GIS experts to use these applications via browser, desktop, or mobile clients. Because of its compliance with data and application interoperability standards, ArcGIS can be integrated into the broader IT landscape in support of various business workflows.

When you want it

Easy access to information

ArcGIS organises and manages geographic information to support fast and efficient visualisation and analytics applications, irrespective of the amount of data held within an organisation and provides tools to manage data effectively from a wide number of different systems.

Where you want it

Freedom to do business anywhere

ArcGIS is an integrated collection of GIS software products for building a complete GIS for your organisation. It enables users to deploy GIS functionality wherever it is needed—in desktops, servers, or custom applications; over the Web; or in the field.

Centrally managed, high performance GIS applications and services can be accessed throughout an organisation so you can reliably deliver geographic information into the hands of those who need it including analysts, decision makers, field workers, and the public.

How you want it

Tailored to your needs

ArcGIS delivers a wide range of development applications to build bespoke and secure GIS solutions for any working environment, including a comprehensive framework for the creation of fully functional GIS Web applications or the integration of GIS tools with Virtual Earth and Google Maps.

With ArcGIS developers have choice in the range and capabilities of applications that they can use for custom projects.

ArcGIS 9.3 Improves Your Entire GIS Workflow

The numerous enhancements to ArcGIS® improve spatial information management, meaningful and attractive map creation, mobility, information dissemination, and planning and analysis—all within a standards-compliant environment.



What's New in Desktop GIS

ArcGIS Desktop

ArcGIS Desktop 9.3 provides a variety of enhancements in cartography, modelling and analysis, 3D visualisation, and developer tools to enable high-quality map production.

Cartography

- Embed feature attributes, map layers, and coordinate system information when exporting to PDF (Acrobat® 9)
- Control complex text labelling including contour labelling and label placement inside and around polygons
- WYSIWYG editing of cartographic representations and geometric effects allows you to better see how an edit will impact your map
- Simulate legend symbol transparency to better match transparent layers in your maps

Modelling and Analysis

- Buffer tool improvements include support for geodesic buffers and better performance
- Near tool now works with points, lines, and polygons and can find multiple feature classes

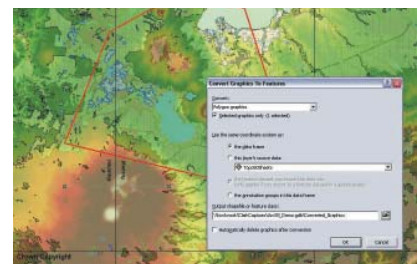
- Scatterplot matrix graph lets you explore relationships between sets of related variables
- Ordinary Least Squares and Geographically Weighted Regression tools help you understand how processes vary over space
- Contour with Barriers tool improves contouring
- Python scripts are run in process, significantly reducing execution time
- Geoprocessing error messages now link to a description of the problem and recommended solutions

3D Visualisation

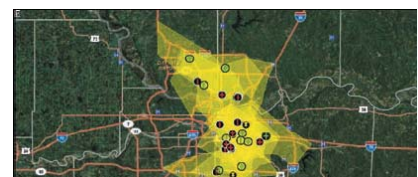
- Realistic displays can now be created using COLLADA models
- “Billboarded” point symbols (3D symbols that stand on a 3D surface), such as pushpins, are now available
- Dynamic tracking using the ArcGIS Tracking Analyst extension can now be performed in 3D
- QA/QC tool makes creating terrain datasets in your geodatabase from point data much easier

Developer Tools

- Visual Studio® 2008 support with integrated developer help topics and code snippets
- Improved real-time monitor and dynamic display performance
- More Java™-focused developer resources
- A new extensible framework for building custom editing solutions

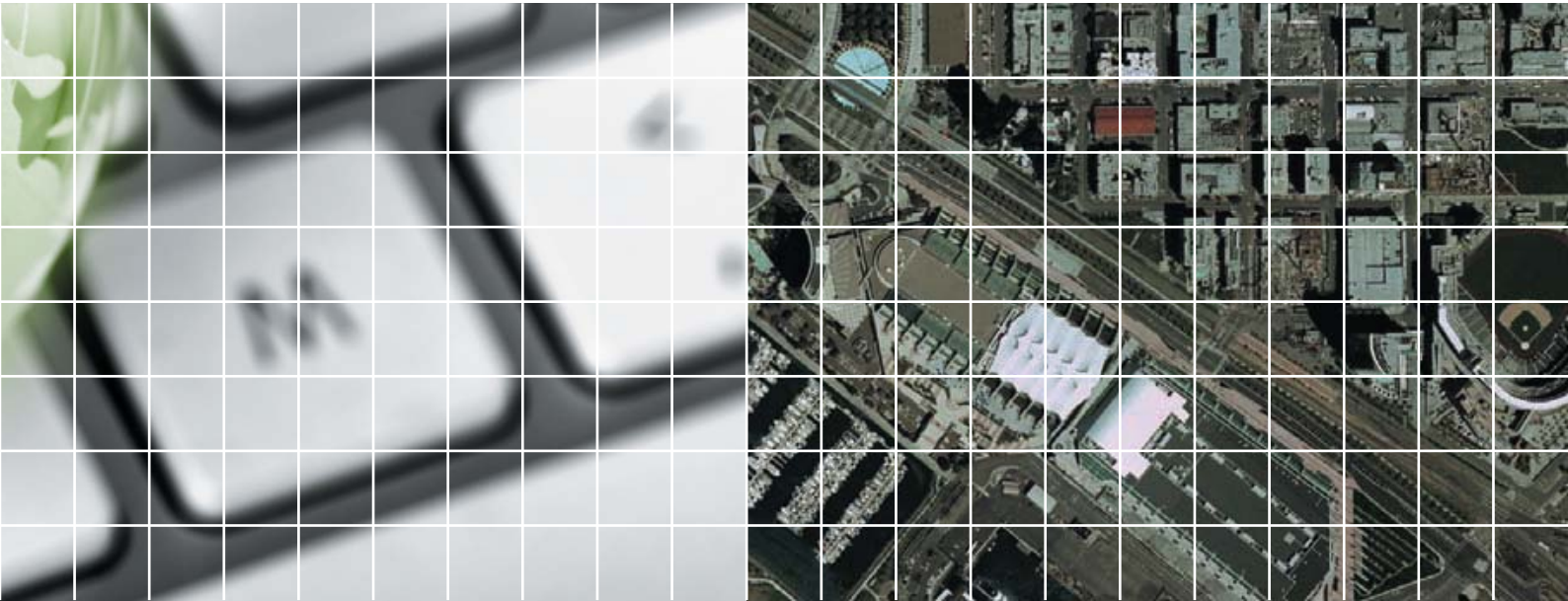


The new Convert Graphics to Features function allows you to create features by drawing graphics without using the editor.



ArcGIS 9.3 includes enhanced dynamic display performance.

Visionary



What's New in Mobile GIS

ArcGIS Mobile

ArcGIS Mobile 9.3 includes both a Software Developer Kit (SDK) and a ready-to-use application for mobile data collection and inspections. ArcGIS Server provides central configuration, management, and deployment of mobile GIS data, maps, tasks, and projects over wired and wireless networks to Windows Mobile® devices.

ArcGIS Mobile Application

- Configure applications for mobile GIS users that support Windows Mobile Pocket PCs
- Rapidly deploy mobile GIS without needing to develop your own custom solution
- Create and deploy mobile GIS projects and serve mobile GIS maps easily and efficiently
- Task-focused user interface enables you to view maps, collect features, build work lists, search features, and synchronise directly with the server
- Utilize either the device rocker or stylus to quickly access and update tasks and projects
- Target field-specific workflows and business processes

Administrative Tools and Resources

- Easily manage and configure your mobile projects within ArcGIS Server Manager
- Quickly post your GIS edits directly to ArcGIS Server in real time
- Directly download your mobile projects to the device from the deployment Web page
- Rapidly deploy or provision mobile devices in the field without returning to the central office

Support for Windows Platforms

ArcGIS Mobile Application

- Windows Mobile 5.0 and 6.0 Pocket PCs

Software Development Kit

- Windows Mobile 6.0 Classic, Standard, and Professional editions
- Windows Mobile 5.0 Pocket PC and Smartphone
- Windows Mobile 2003 for Pocket PC
- Windows CE .NET 5.0 and 6.0
- Windows Vista®, XP, and XP tablet

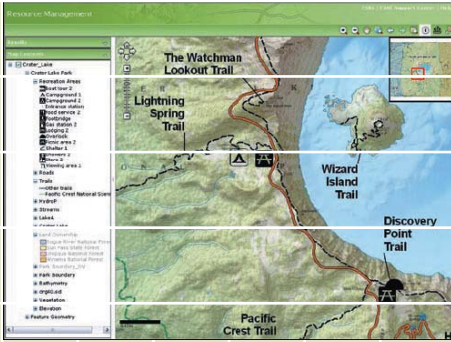
Developer Tools

- A set of .NET components for synchronising, caching, and displaying GIS data
- Enhanced editing capabilities and new sketch tools for manipulating geometries
- Better support for static, local basemaps using ArcGIS Desktop geoprocessing tools
- Improved map control rendering to support multiple data sources and graphic layers
- Expanded projection support

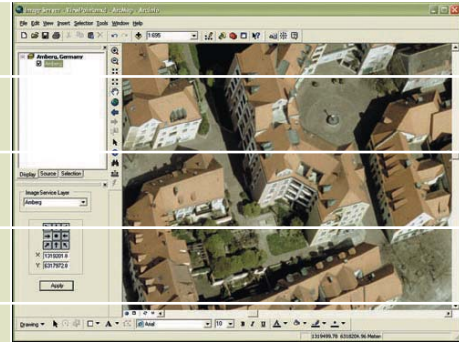


View, navigate, and serve maps using the ArcGIS Mobile 9.3 application.

thinking delivered



ArcGIS Server on-demand caching allows for high-performance Web applications



ArcGIS Server image service provides fast delivery of images to many clients including ArcGIS Desktop

What's New in Server GIS

ArcGIS Server

ArcGIS Server 9.3 offers new services and applications to give you more control of your geospatial resources. You can now more efficiently manage and deliver high-performance mapping, image, and geoprocessing services to a wide range of applications.

Services and Applications

- ArcGIS API for JavaScript™ provides out-of-the-box mashup capabilities to fuse together various Web services
- ArcGIS Server Services Directory provides a listing of your services and capabilities for other users to view
- New image service provides an optimised way of serving raster data to clients as pictures or as multiband images
- New Open Geospatial Consortium, Inc.® (OGC®), service types are available including Web Feature Service/ Transactional Web Feature Service (WFS/WFS-T) for vector data and Web Coverage Service (WCS) for raster data
- Support for publishing and managing live KML Network Links is improved including high-speed regional “super overlays”
- Web ADFs for building rich GIS applications on the Web are updated

Administrative Tools and Resources

- Configure role-based security for users and groups, controlling access to and protecting your Web services and applications
- Monitor and filter log files for troubleshooting problems with your GIS server
- Build fast map displays on the fly with dynamic map cache generation

Support for More DBMSs

- ArcGIS 9.3 supports the new spatial types in Microsoft® SQL Server® 2008 and open-source PostgreSQL
- Enterprise ArcSDE® technology is now available as a native 64-bit application for Windows® and Linux®

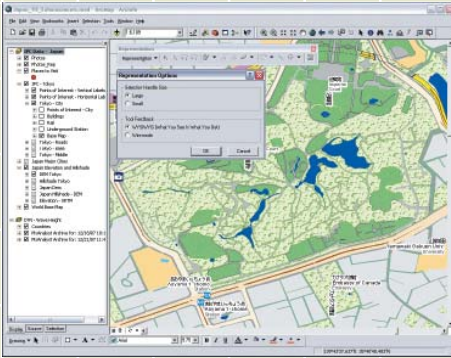
Developer Tools

- Create a simple overlay of data or embed maps using ArcGIS API for JavaScript
- Mash up your ArcGIS Server content inside Google Maps™ and Microsoft Virtual Earth™
- Access services published with ArcGIS Server in client-side Web applications through a series of URL commands using the new ArcGIS Server REST API

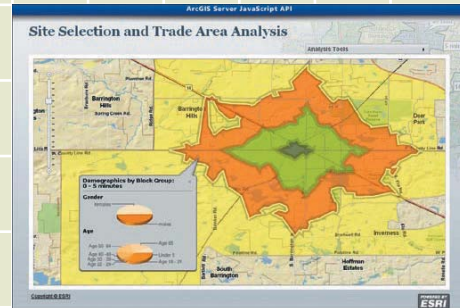
ArcGIS Online Services

ArcGIS Online Services are hosted by ESRI, so you don't have to worry about data acquisition and maintenance or make additional investments in hardware infrastructure and staffing to maintain data. You can combine ArcGIS Online Services with your local data and services from ArcGIS Server, ArcIMS®, Open Geospatial Consortium Web Map Services (WMS), and KML services. Get instant access to

- Ready-to-use 2D maps and 3D globes
- Imagery, street maps, shaded relief, topographic maps, political maps, and reference layers cartographically rendered to support multiscale display
- ArcGIS Online Services via the ArcGIS API for JavaScript to create lightweight Web applications and mashups



What you see is what you get (WYSIWYG) editing is included at ArcGIS 9.3



Mash up geographic content with GIS functionality in easy-to-build Web applications

Resource Centres

Resource Centres are a single location online where you can find help to get the most out of ArcGIS. Resource Centres are available for ArcGIS Desktop, ArcGIS Server, ArcGIS Mobile, ArcGIS Engine, ArcGIS Explorer, ArcGIS Online, ArcIMS, and the geodatabase.

- Documentation
- Support pages
- Discussion forums
- Blogs
- Maps, globes, and layers
- Ability to share developer code

About ESRI (UK)

ESRI (UK) is part of the global ESRI network. With the single, largest pool of GIS expertise in the UK, the company is the technical authority on GIS. ESRI (UK) provides solutions, technology and services including off the shelf applications built on the ArcGIS software suite and an extensive range of consulting and training services.

Its offerings meet a range of business needs in different markets including Business, Local & Central Government, Public Safety, Utilities and Telecommunications, as well as catering for system integrators and application developers through the ESRI Developer Network.

ESRI (UK)'s customers include both public sector clients such as Manchester City Council, Leeds City Council, Metropolitan Police, DCLG, The Environment Agency and businesses including Thames Water, Royal & SunAlliance and The AA.

By building a deep understanding of its customers' needs, ESRI (UK) is able to help businesses become more profitable and public service more efficient through the better use of GIS. This process of enhancing sustainable business growth by developing solutions with the power to anticipate and meet industry specific requirements is known as Visionary Thinking.

Visit www.esriuk.com/9.3 for ArcGIS 9.3 demos, detailed documents about what's new in ArcGIS 9.3 and frequently asked questions.