

Technical
White Paper



ESRI Developer Network (EDN)

Version 9.3

December 2008

Confidentiality Statement

This document contains information which is confidential to ESRI (UK) Limited. No part of this document should be reproduced or revealed to third parties without the express permission of ESRI (UK) Limited.

© 2008 ESRI (UK) Ltd and its third party licensors. All rights reserved.

ESRI (UK) Ltd

Millennium House
65 Walton Street
Aylesbury
Buckinghamshire
HP21 7QG

Tel: +44 (0) 1296 745500

Fax: +44 (0) 1296 745544

Website: www.esriuk.com

Contents

Introduction	3
The EDN Package for Developers	4
EDN Software Library	4
EDN Web Site - http://edn.esri.com/	5
EDN Documentation Library	6
Developer Support	6
Developer Training	7
'Get you started' Consultancy	7
EDN Maintenance	7
Events for Developers	7
Which Development Platform	8
EDN Commercial Rules	9
Pricing and Contact Details.....	10

Introduction

The ESRI Developer Network (EDN) is an annual subscription based programme that provides software developers with the resources needed to build a wide range of custom geographic information system (GIS) solutions. The objectives of the EDN programme include providing developers with tools that increase productivity and foster a collaborative environment, reduce the cost and complexity of GIS development, and provide maximum opportunities for developers on the ArcGIS® platform. EDN subscriptions are available to all developers and not just ESRI business partners.

EDN is available as a software only option, or as a series of packages, the developers package is described in the next section. Other packages include a package for Systems Integrators, and one for Defence Integrators. For further information on these packages, please contact sales@esriuk.com

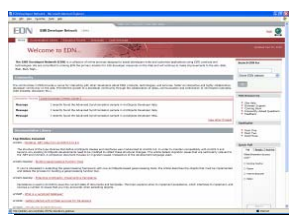
The EDN Package for Developers

For the UK developer marketplace, ESRI (UK) has created the EDN Package to ensure that EDN subscribers are best able to utilise the advanced software technologies in the full Enterprise EDN software library. This allows ESRI (UK) to be able to give a uniformly high level of customer care from our support department by ensuring that subscribers are properly informed as to how to configure, develop and deploy the technology in a standard fashion.

The EDN Package is made up of the following components



Software



EDN Web Site



Developer Support

+



Training

+

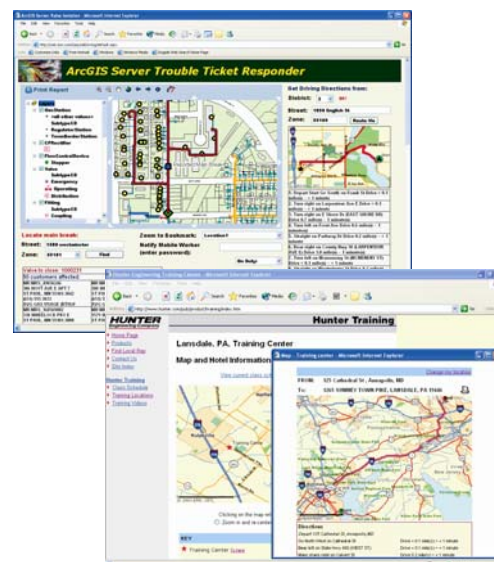


Get you Started Consultancy

EDN Software Library

During the EDN subscription term developers will receive the latest versions of ArcGIS developer software as they are released, with a license that expires at the end of their term. **The software included in the EDN subscription is for development and testing only. EDN does not include any rights for deployment or production use.**

Because building GIS applications from scratch takes more time and resources than might be readily available, the ESRI Developer Network offers a suite of component-based development frameworks that help you rapidly build industry specific GIS applications. These applications can be delivered on the desktop, client, Web, or server tier and embedded into both new and existing applications. The tools cover both Microsoft .NET and Java development environments.

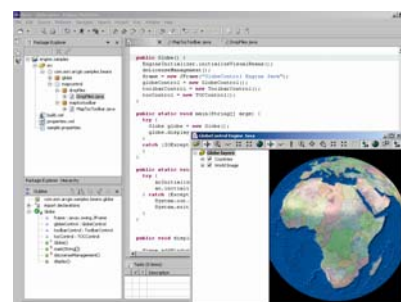


The software components of the EDN subscription include:

- ArcGIS Server—Enterprise Advanced Edition - GIS application server for centrally managed GIS including Web, 3D and Mobile ADF's
- ArcGIS Engine—Components for creating custom desktop GIS applications
- ArcGIS Image Server - Management, processing, and distribution of imagery
- Digital Documentation—For all products
- ESRI Data and Maps—Set of map data at many scales of geography
- ArcIMS—Geopublishing on the Internet

Optionally

- ArcView Single Use including the Spatial Analyst, 3D Analyst and Network Analyst Extensions
- ArcEditor Single Use including the Spatial Analyst, 3D Analyst and Network Analyst Extensions
- ArcInfo including the Spatial Analyst, 3D Analyst and Network Analyst Extensions



The latest version of ArcGIS encourages developers to use the desktop tools (ArcView, ArcEditor or ArcInfo) to author GIS services such as maps and models. Working in this way enables key parameters (e.g.: symbology, scale thresholds, data connections etc,) to be defined in the desktop rather than programmatically. ESRI's philosophy is that this approach maximises developer productivity as content can be defined using a graphical UI which minimises the need for coding.

For ArcGIS Server all map and geoprocessing services must be authored in this way which means a copy of either ArcView or ArcEditor is essential for EDN subscribers wishing to use ArcGIS Server. For ArcGIS Engine the desktop tools are not essential but they can still prove extremely useful for data preparation, symbolisation etc.

For EDN subscribers wishing to store data in an Enterprise Geodatabase ArcEditor or ArcInfo is strongly recommended. Whilst data can be loaded and managed using the ArcGIS Server command line interface, productivity is greatly increased by using the ArcCatalog application which comes as part of ArcEditor or ArcInfo.



EDN Web Site - <http://edn.esri.com/>

The EDN Web site serves as the primary technical and collaborative resource for all aspects of the ESRI developer platform. Resources are tailored to support both the novice and expert developer alike. The site contains information that cuts across all aspects of the ArcGIS product line. Case studies and design patterns will be valuable to developers, DBAs, and system integrators as they embark on projects that leverage the ArcGIS platform. The EDN Web site provides a portal to all ESRI® developer products.

Developers will no longer have to access individual help and documentation systems. Rather, they will now leverage ArcGIS Help systems via the EDN Web site. This provides an environment that makes it straightforward to transition between developer products.

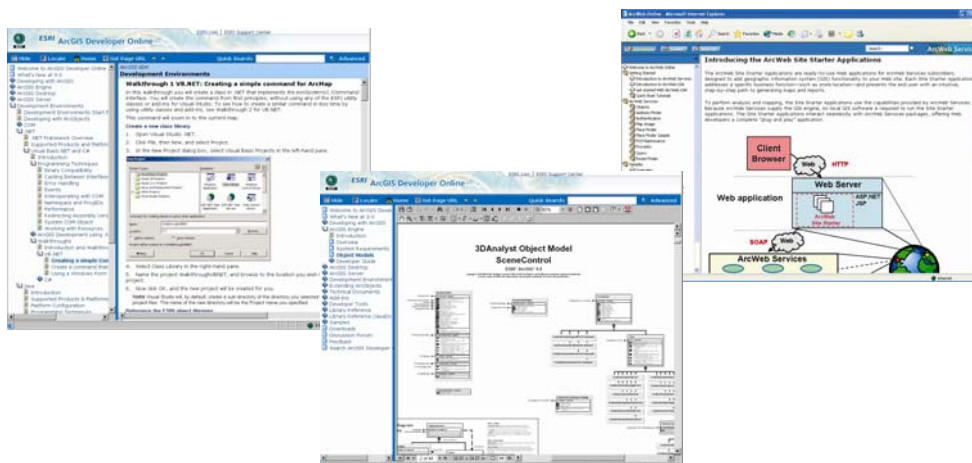
The EDN Web site will connect ESRI developers and subscribers. By providing the building blocks of a developer community, ArcGIS developers will be able to interact, share ideas, and collectively strengthen the ESRI development platform.

Some of the collaborative features of the EDN Web site include

- Forums/Newsgroups
- Webcasts and chats on current issues
- User contributions
- Sample code and technical insight
- Improved search engine
- E-mail alerts
- Accelerated product and documentation availability

EDN Documentation Library

The EDN Documentation Library is a comprehensive help system that provides the developer resources needed to be successful with ArcGIS. The EDN Documentation Library allows the developer to install or browse online any part of the developer help system needed to solve a problem. The EDN Documentation Library is accessed via the EDN Web site. Because it is easy to provide incremental releases of documentation, particularly via the Web, subscribers are ensured of access to the most up-to-date resources. Elements of the help system include library documentation, help index and search facility, code samples, object models, utilities, and integrated development environment (IDE) integration information.



Developer Support

The EDN Web site provides support resources for developers. All subscribers to EDN receive a subscription to the ESRI (UK) Developer Support Group (DSG), which allows EDN subscribers to log calls of a developer nature on any of the EDN developer products and options. The subscription includes 10 calls to the DSG team which can be taken on an as and when basis. When the initial DSG subscription has been consumed, the subscriber will normally take on a further subscription. There is no time limit on the DSG subscription calls, the 10 calls remain valid over the period of the EDN subscription.

Developer Training

Training is required when subscribing to EDN. Training consists of five days of instructor-led classes for developers at an ESRI (UK) training facility matched to suite the subscribers needs. Typically this will include the 3 day Introduction to programming with ArcObjects course, and a 2 day course specific to the development environment that the subscriber will be working in.



'Get you started' Consultancy

Included in the EDN Package is a day's consultancy from the ESRI (UK) Technical Solutions Group to give initial advice and to help developer with a fast track start, and to identify best training route.

EDN Maintenance

EDN simplifies the maintenance of software and licenses. A simple EDN subscription reduces the time and effort associated with licensing and maintaining a range of ESRI development software. During the term of a subscription, developers will receive product and digital documentation upgrades, ensuring that they always have the latest products and information.

Events for Developers

The ESRI Developer Summit held annually is the premier developer event designed for developers, software architects, and decision makers interested in building GIS and mapping applications.

At the annual ESRI International User Conference, EDN subscribers can attend a special track for developers.

ESRI (UK) also hold regular seminars for developers using EDN.

Which Development Platform

Which ESRI Development Platforms are best suited to your needs?

Deployment Scenarios	ArcGIS Server	ArcGIS Engine
Desktop Application		x
Mobile Client	x	x
Web Application	x	
Server-based	x	
General Suitability		
GIS / Mapping Functionality	Very High	Very High
Data Source Editing	x	x
ArcGIS Extension Functionality	x	x
Optimised Annotation & Labelling	x	x
Support for a Variety of Spatial Data Types	High	High
Geoprocessing	x	x
Geodatabase Aware	x	x
ArcObjects Software-Based	x	x
Project-Based GIS		x
Departmental GIS	x	#
Enterprise GIS	x	#
Support for Server Deployments	x	#
Available by Subscription		
GIS Expertise Needed to Build Solutions	Moderate	Moderate
.Net Support	x	x
Java Support (J2SE, J2ME, J2EE)	X	X
Suitable for Internet Geopublishing	Moderate	N/A

As a client to ArcGIS Server

Visit www.esriuk.com/products for comprehensive information on each product

EDN Commercial Rules

EDN Software including the ArcView, ArcEditor & ArcInfo options are for development and testing purposes only.

EDN is sold and licensed per developer (subscriber).

EDN software cannot be shared with non subscribers.

An EDN subscriber can use the software on more than one machine and at different release levels.

Authorisation files are issued annually for 12 months, licenses are not perpetual.

An EDN Subscription does not include any rights for deployment or production use.

An EDN subscription requires a mutually signed ESRI Master Licence Agreement (MLA) dated after October 2006.

The EDN license cannot be used by concurrent developers.

The EDN licence has no rights for deployment, run-time or server technology for production or commercial uses.

An existing EDN user may upgrade their existing EDN ArcView option to an EDN ArcEditor or EDN ArcInfo option, by paying the difference in price at any time. Existing EDN users with no desktop options can upgrade to a desktop option at any time by paying the option price.

Pricing and Contact Details

Pricing is subject to change without notice please contact the following:

Email: sales@esriuk.com

Tel: 01296 745500

ESRI (UK) Ltd
Millennium House
65 Walton Street
Aylesbury
Buckinghamshire
HP21 7QG